

VOCATIONAL QUALIFICATIONS

A GUIDE // TO VOCATIONAL QUALIFICATIONS
FOR PARENTS AND STUDENTS

HENLEYCOL.AC.UK



THE FACTS SPEAK FOR THEMSELVES.

Vocational courses enable a student to study one subject in an in-depth way that will develop the skills and specialist knowledge that employers value, enabling them to be successful in jobs of the future.

74%

OF EMPLOYERS SAY THEY WANT A MIX OF ACADEMIC AND VOCATIONAL QUALIFICATIONS*

*Source: Inspiring Growth Survey, 2015

1 IN 4

STUDENTS WHO WENT TO UNIVERSITY IN 2017 HAD A BTEC**

**Source: UCAS and HESA data on entry to HE, 2017

90%

OF BTEC STUDENTS ARE EMPLOYED FULL-TIME AFTER GRADUATING***

***Source: London Economics Report, 2013

AN INTRODUCTION TO VOCATIONAL QUALIFICATIONS

At school, you will have developed a good idea of the kind of learning that suits you best. Some students thrive in a highly academic environment with an emphasis on theory and largely exam-based assessment; others do much better in a more practical environment where the learning is more closely linked to industry and assessment is based more on project work.

If you prefer to learn through practical project work, you may want to consider a vocational qualification. A full Extended Diploma (Level 3) is taken over 2 years and is the equivalent of three A Levels. These qualifications can provide an alternative route to university. During a vocational course, a student will be assessed on their practical skills but academic skills are also still required and will continue to be assessed. The key strength of these courses is that they enable a student to study one subject that they have a flair for in an in-depth way that will provide them with the type of specialist knowledge that employers value.

BTEC stands for 'Business and Technology Education Council', the body that first oversaw this qualification in the UK. BTECs are becoming increasingly popular as an alternative to A Levels, but they actually cover a whole range of levels. Level 1 and Level 2 BTECs are equivalent to GCSEs, Level 3 to A Levels and Level 4-6 hold the same status of achievement as different stages of a degree. BTECs are vocational qualifications – practical courses that relate to a particular profession, area of work or technical skill – and include subjects such as business studies, engineering, health and social care, information technology, creative media and travel and tourism. You can't study traditionally academic subjects like English at BTEC level.

We also offer vocational qualifications through UAL (University of the Arts London) who specialise in creative subjects, such as art, fashion, design and performing arts.

- **1 in 4 students who go to university have a BTEC.**
- **BTEC stands for 'Business and Technology Education Council' the body that first oversaw this qualification in the UK.**
- **UAL stands for 'University of the Arts London' and is a collegiate university in London, England, specialising in arts, design, fashion and the performing arts.**

Vocational qualifications are becoming increasingly popular as an alternative to A Levels, but they actually cover a whole range of levels.

- LEVEL 1** GCSE
- LEVEL 2** GCSE
- LEVEL 3** A Level
- LEVEL 4** Yr 1 degree
- LEVEL 5** Yr 2 degree
- LEVEL 6** Yr 3 degree
- LEVEL 7** Postgraduate

CONTENTS

- 7** Applied Science
Art & Design
Level 4 Art & Design
- 8** Business
Children's Play, Learning and Development
- 9** Creative Media Production (Broadcast Journalism)
Creative Media Production (TV and Film)
- 10** Engineering
Forensics and Criminal Investigation
- 11** Health and Social Care
ICT and Computing
- 12** Music Performance and Production
Performing Arts
- 13** Public Service/Social Studies
Sport and Exercise Sciences
- 14** Travel and Tourism
Travel and Tourism (Introduction to Cabin Crew)
- 15** Extended Certificates and Subsidiary Diplomas

At The Henley College, we offer a range of Level 2 and 3 qualifications to suit your needs, plus one Level 4.

WHAT ARE THE DIFFERENCES BETWEEN VOCATIONAL AND A LEVEL QUALIFICATIONS?

One of the main differences between a BTEC and A Levels is the way students learn and are tested. A Levels mainly involve two years of study with exams at the end, whereas BTECs are assessed throughout the two years through a combination of tests, coursework and practical projects.

Level 2

The entry requirements for Level 2 BTEC courses vary from college to college. Generally, Level 2 applicants are expected to have at least 3 GCSEs at grade 3.

Progression

Plenty of universities and higher education colleges will offer places onto degree and degree-level courses to students with 18 unit BTECs. If you opt for a 12 unit BTEC, most higher education courses will require you to have an A Level or AS Level as well. It's all down to the individual institution and course, so it's worth checking what level and combination of qualifications you might need if you already have an idea of what you want to study after Level 3.

Many of our students go on to prestigious universities, while others enter the world of work and complete further study for degree or higher level apprenticeships.

Level 3

As with A Levels, students generally need at least five GCSEs at grade 4 or above, to include English and Maths, to study a Level 3 BTEC.

WHAT LEVEL 2 COURSES DO WE OFFER?

- Business
- Children's Play, Learning and Development
- Engineering
- Health and Social Care
- Information and Creative Technology
- Public Services
- Travel and Tourism (Introduction to Cabin Crew)

WHAT LEVEL 3 COURSES DO WE OFFER?

- Applied Human Biology
- Applied Law
- Applied Psychology
- Applied Science
- Art and Design
- Business
- Children's Play, Learning and Development
- Creative Media Production
- Criminology
- Engineering
- Forensics and Criminal Investigation
- Health and Social Care
- ICT and Computing
- Music Performance and Production
- Performing Arts
- Production Arts
- Public Services
- Sport and Exercise Science
- Travel and Tourism

WHAT LEVEL 4 COURSES DO WE OFFER?

- Art and Design

SOME KEY STATS FOR 2019:

At Henley:

In 2019, 38% BTEC Business students achieved a D*D*D* - the equivalent of 3 x A* at A Level, in UCAS points.

In 2019, 60% BTEC Travel and Tourism students achieved a D*D*D* - the equivalent of 3 x A* at A Level, in UCAS points.



UCAS POINTS

Level 3 Vocational Diplomas qualify for UCAS points towards your university application in the same way as A Levels and AS Levels.

This chart shows how many points each vocational qualification is worth, based on the grade you achieve.

BTEC National Grade	Certificate	Extended Certificate & Subsidiary Diploma	Foundation Diploma
D* - Distinction*	28	56	84
D - Distinction	24	48	72
M - Merit	16	32	48
P - Pass	8	16	24

BTEC National Grade	90-credit Diploma	Diploma	Extended Diploma
D*D*D*	-	-	168
D*D*D	-	-	160
D*DD	-	-	152
DDD	-	-	144
DDM	-	-	128
DMM	-	-	112
D*D*	84	112	-
D*D	78	104	-
DD	72	96	-
DM	60	80	-
MMM	-	-	96
MMP	-	-	80
MM	48	64	-
MPP	-	-	64
MP	36	48	-
PPP	-	-	48
PP	24	32	-

If you're also studying for A Levels and want to compare UCAS points, here's a quick guide:

Grade	A Level	AS Level
A*	56	-
A	48	20
B	40	16
C	32	12
D	24	10
E	16	6

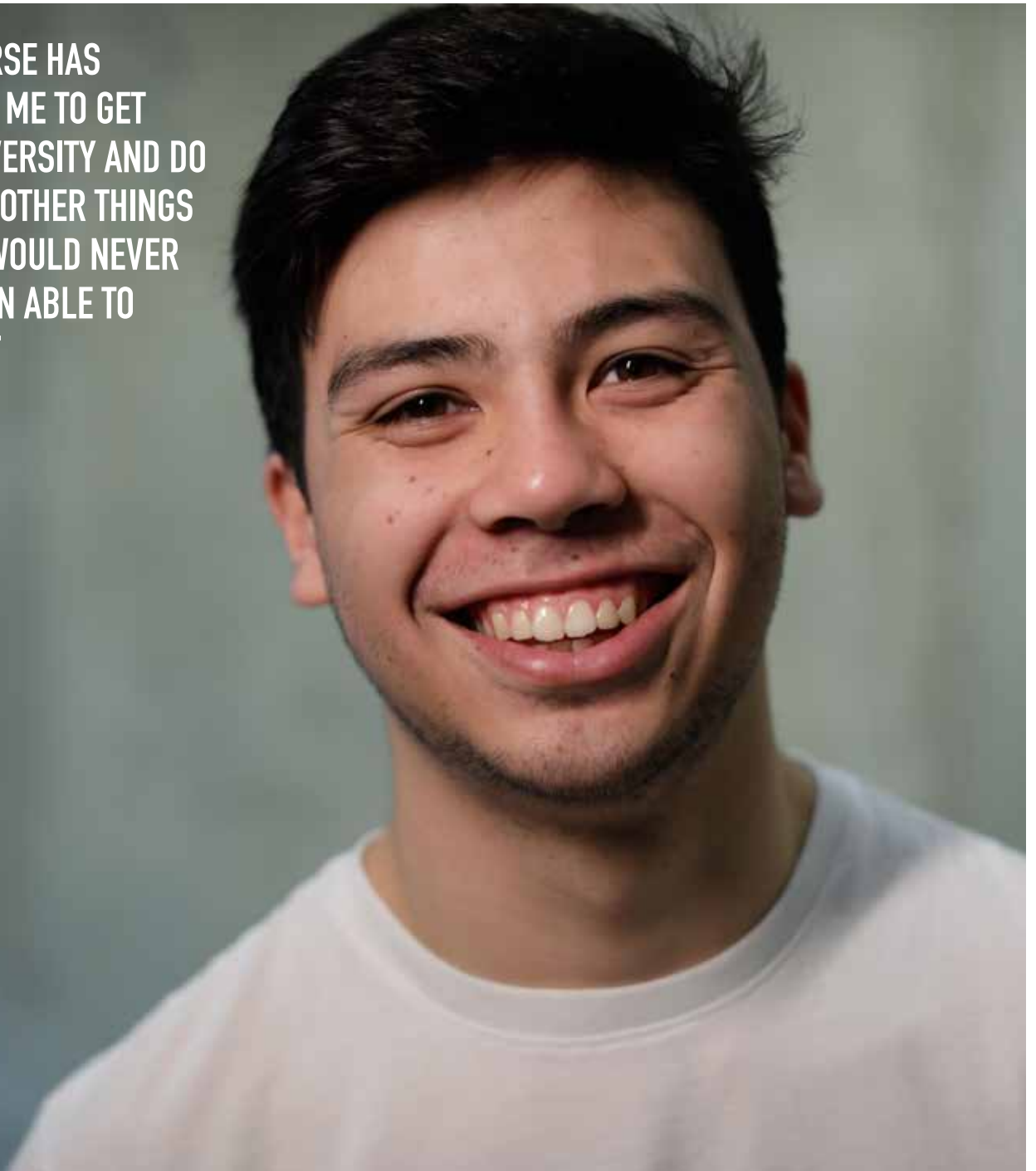
UAL (University of the Arts London)

UAL Grade	Diploma Grade	BTEC equivalent	UCAS Points
D - Distinction	3 x A's	D*D*D*	168
M - Merit	3 x B's	DMM - DDM	120
P - Pass	3 x D's	MPP - MMP	72

DID YOU KNOW?

A Triple Distinction is equivalent in UCAS points to 3 x A* grades at A Level.

**“MY COURSE HAS
ALLOWED ME TO GET
INTO UNIVERSITY AND DO
SO MANY OTHER THINGS
WHICH I WOULD NEVER
HAVE BEEN ABLE TO
ACHIEVE.”**



APPLIED SCIENCE: Level 3 Extended Diploma

WHAT WILL I STUDY?

Equivalent to three A Levels, this course is ideally suited to students who enjoy Biology, Chemistry, Mathematics and Physics. You will gain a good grounding at advanced level in all three sciences over two years. The unit content varies from pure science topics, such as 'Human Body Systems', to more practical units such as 'Laboratory techniques and their application'. There are also some vocational units such as 'Genetics and Genetic Engineering' or 'Medical Physics'. You will participate in trips and benefit from the insights and experience provided by a range of guest speakers. Work experience opportunities include a science industry of your choice, with possible placements in a hospital laboratory, science research or analysis, veterinary science or conservation.

WHAT NEXT?

This course is an accepted qualification for entry into university, particularly for science-related degrees such as biochemistry, dietetics, forensic science and food science. Alternatively, students may consider direct entry into employment.

DURATION

2 years

ENTRY REQUIREMENTS

Standard entry requirements, plus GCSE 4 in two Science subjects or Merit in BTEC Science.

For full course details and how to apply, please visit www.henleycol.ac.uk

ART AND DESIGN: Level 3 Extended Diploma

WHAT WILL I STUDY?

This two year course will give students a critical and contextual awareness of different perspectives and approaches within art, design or related subjects of study or work. You will learn how to research, analyse and evaluate relevant information and ideas for creative projects, developing time management and planning skills. You will develop your knowledge through the practical application of art and design, whilst learning how to critically review, evaluate and reflect on the effectiveness of your methods, actions and results. As you progress, you will learn how to solve complex problems through the application of art, design or related practical, theoretical and technical understanding, and effectively present yourself and your work to appropriate audiences.

WHAT NEXT?

This course is an accepted qualification for entry into art college or university to study a range of related subjects. The final unit of the qualification is available at Level 4. See *Art and Design: Foundation Diploma*.

DURATION

2 years

ENTRY REQUIREMENTS

Standard entry requirements plus grade 5 in GCSE Art & Design. Applicants are required to bring a portfolio to interview.

For full course details and how to apply, please visit www.henleycol.ac.uk

ART AND DESIGN: Level 4 Foundation Diploma

WHAT WILL I STUDY?

This 1 year course provides a transition from general education to specialist art, design and media education. The course is split into three parts where students will try out different areas of art, media (TV or Film) and photography.

PART 1: Learning skills and context.

The first eight weeks involve two-weekly rotations which guide students through approaches and processes important in areas of art, media, photography and communication. Students will learn about the creative process, to think outside of boxes,

reflect on work that is produced and think analytically and critically about the messages within creative work.

PART 2: Development and progression, in chosen route.

PART 3: Proposal and Realisation, in chosen route.

WHAT'S NEXT?

This course will prepare students well for entry to university courses, or art school, to study a range of subjects that may include fashion and textiles, graphic design, visualisation and animation, fine art, illustration, artistic make-up and 3D animation.

BUSINESS:

Level 3 Extended Diploma

WHAT WILL I STUDY?

This two-year course, equivalent to three A Levels, will appeal to you if you have a passion for the business world, or would like to develop your entrepreneurial skills. You will gain a practical understanding of how businesses organise themselves, studying areas that include the business environment, planning, business accounting and finance, human resource management, marketing and retail. You will also examine how businesses market their products and services, how they recruit and develop their staff, how and why they conduct market research, and how they communicate.

WHAT NEXT?

This course is an accepted qualification for entry into university, for subjects including accounting, finance and business and management. It is also excellent preparation for those wanting to enter employment.

DURATION

2 years

ENTRY REQUIREMENTS

Standard entry requirements including a grade 4 in GCSE English and Maths.

We also offer [Business: Level 2 Certificate](#), a one year course.

For full course details and how to apply, please visit www.henleycol.ac.uk

CHILDREN'S PLAY, LEARNING AND DEVELOPMENT:

Level 3 National Foundation Diploma

WHAT WILL I STUDY?

This course, equivalent to 1.5 A Levels, offers a broad range of learning over 7 mandatory units and can be studied alongside other qualifications including A Levels and extended certificates. The topics covered include children's development, communication and literacy, play and learning, keeping children safe, children's physical development, care and health needs and working with parents and others in Early Years. Students will also complete 300 hours of work experience within a sector relevant role.

WHAT NEXT?

This course is generally taken alongside other qualifications as part of a two-year programme of learning. It will enable learners to progress to a wide range of degree programmes.

DURATION

2 years

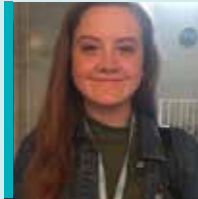
ENTRY REQUIREMENTS

Standard entry requirements.

We also offer [Children's Play, Learning and Development: Level 2 Certificate](#), a one year course.

For full course details and how to apply, please visit www.henleycol.ac.uk

CASE STUDY SOCIAL SCIENCES



CARA MCCAFFREY
STUDENT PROFILE

Studied

BTEC Level 3 Extended Diploma Health & Social Care.

Why did you choose the course?

"During my GCSEs I was interested in psychology and nursing, and starting a BTEC in

a similar field allowed my interest to further and my academic side to grow immensely. I studied Health and Social Care Extended Level 3 and instantly felt like the course was for me. It seemed to be a perfect path for me to

get to where I wanted in the future."

Next steps

"After finishing first year with a Distinction, I had my eyes set on university and an end goal of becoming a nurse. I successfully applied to and am

now studying at the University of Birmingham, which is part of the Russell Group."

Cara came to The Henley College from Furze Platt School.

CREATIVE MEDIA PRODUCTION (BROADCAST JOURNALISM): Level 3 Extended Diploma

WHAT WILL I STUDY?

This course, equivalent to three A Levels, provides you with an exciting opportunity to develop your skills in broadcast journalism. You will be encouraged to experiment, build your imagination and express thoughts and ideas through visual and aural media. Highly practical in its nature, this course combines the areas of journalism, investigative research, along with studio and outside broadcasting for both TV and Radio. You will have the opportunity to work in our TV studio and will become a member of our very own production company, VIBE productions. You will work on producing content for magazines and our social media sites. Prior knowledge and experience is not required, but an interest in journalism and current affairs is essential.

WHAT NEXT?

This course is an accepted qualification for entry into university, subjects may include documentary making, sports media, broadcasting and journalism. Alternatively, students may consider direct entry into related employment.

DURATION

2 years

ENTRY REQUIREMENTS

Standard entry requirements. Applicants are set a task to complete prior to interview.

For full course details and how to apply, please visit www.henleycol.ac.uk

CREATIVE MEDIA PRODUCTION (TV AND FILM): Level 3 Extended Diploma

WHAT WILL I STUDY?

This course, equivalent to three A Levels, provides you with an exciting opportunity to work and develop your skills in TV and film editing and other media-related disciplines such as print and radio. You will be encouraged to experiment, develop your imagination and express thoughts and ideas through visual and aural media. Highly practical in its nature, this course combines the areas of film and video editing, print production, scriptwriting and storyboarding. You will learn how to create and manipulate images, documentaries, a radio drama, music videos, short films as well as a variety of other productions. You will have the opportunity to work in our film and TV studio and will become a member of the newly established VIBE production company, showcasing a wide range of media work produced by our students at our annual 'Oscars' night.

WHAT NEXT?

This course is an accepted qualification for entry into university, in areas including film and documentary making, sports media and journalism, 3D animation, art and photography. Alternatively, students may consider direct entry into related employment.

DURATION

2 years

ENTRY REQUIREMENTS

Standard entry requirements. Applicants are set a task to complete prior to interview.

For full course details and how to apply, please visit www.henleycol.ac.uk

CASE STUDY CREATIVE MEDIA



**NATAPONG
COLLINS**
STUDENT PROFILE

Studied

Creative Media Production: UAL Level 3 Extended Diploma.

Why did you choose the course?

"The teachers create a safe and fun environment for you, they would do as much

as they could to help but also allow you to figure things out and make mistakes. The two years at Henley were so crucial to me and my development as a filmmaker and a person. My course has allowed me to get

into university and do so many other things which I would never have been able to achieve."

Next steps

"I am at Futureworks University which is a specialised film, television and media

school. After graduating I am hoping to become a Director or work at Pinewood Studios."

Natapong came to The Henley College from The Beaconsfield School.

ENGINEERING: Level 3 Extended Diploma

WHAT WILL I STUDY?

This two year course is the equivalent to 3 A Levels. In the first year, you will focus on areas including engineering principles, computer aided design (CAD), secondary machining, electrical engineering, commercial and quality and design and manufacture. During the second year you will study engineering materials, mechanical principles, microcontrollers, analogue electric circuits, calculus and either further maths or additive manufacturing. There is also a design, build and test project. During the second year, students will undertake work experience, this may be through college contacts with prestigious local companies like Costain, BMW and Carlin Motorsport.

WHAT NEXT?

This qualification is widely accepted as entry to university to study subjects including mechanical engineering, product design and aeronautical engineering. Some students progress onto higher level apprenticeships.

DURATION

2 years

ENTRY REQUIREMENTS

Standard entry requirements, plus grade 4 in GCSE Mathematics and grade 4 in another technical subject like Science or Resistant Materials.

We also offer [Engineering: Level 2 Certificate](#), a one year course.

For full course details and how to apply, please visit www.henleycol.ac.uk

FORENSICS AND CRIMINAL INVESTIGATION: Level 3 Extended Diploma

WHAT WILL I STUDY?

This two year course is equivalent to three A Levels. It is well suited to students who wish to study the sciences and how science can assist the criminal justice system. The course comprises of 13 units which offer a good grounding in advanced science subjects such as the 'Human Physiology' 'Microbiology' and 'Chemical Analysis', as well as extending knowledge of forensic and criminology through units such as 'Criminal Investigation Procedures' and 'Forensic Fire Investigation'. Students will participate in field trips and benefit from a range of speakers. Students will also have the opportunity to apply for work experience within the science industry or criminal justice system, developing a wide range of practical, transferable skills.

WHAT NEXT?

This course is an accepted qualification for entry to university, for science-related degrees and those relating to criminology, criminal psychology and forensics. Alternatively, students may consider direct entry into employment.

DURATION

2 years

ENTRY REQUIREMENTS

Standard entry requirements plus GCSE 4 in two Science subjects or merit in BTEC Science.

For full course details and how to apply, please visit www.henleycol.ac.uk

CASE STUDY ENGINEERING



ALEXANDRA WINCH
STUDENT PROFILE

Studied

Engineering: Level 3
Extended Diploma

Achievements

Alexandra Winch was the winner of 'Young Female Engineer of the Future 2019' at the Oxfordshire High Sheriff Engineering Awards.

Engineering teacher, Adam Kirkwood, nominated Alexandra: "Alexandra joined us in September 2017 with an evident passion for engineering. She enrolled for the BTEC Engineering Extended Diploma at The Henley

College and in addition she enrolled for Maths A Level at the same time. This meant she had effectively enrolled for the equivalent of 4 A Levels. In her spare time she worked for a classic Bugatti restoration business and also spent a week at BMW in Oxford.

Next steps

A Degree Apprenticeship with Rolls Royce Aero Engines. One of 34 candidates from 34,000 applications!

Alexandra came to The Henley College from Pangbourne College.

HEALTH AND SOCIAL CARE: Level 3 Extended Diploma

WHAT WILL I STUDY?

This two year course is equivalent to three A Levels, offering a mix of study and work-based experience. You will focus on areas such as psychology, anatomy and physiology, communication, safeguarding children and adults, complementary therapies and public health. The skills and values needed in the sector are embedded throughout this course. During the two years, students will spend four days at College and one day a week on a work placement. Recent placements have included residential units for people with learning disabilities, schools (including special schools), charities, Riding for the Disabled, hospitals, pharmacies, youth work and dental surgeries.

WHAT NEXT?

This course is an accepted qualification for entry into professional training or university, to study subjects including nursing, midwifery, physiotherapy, paramedic science and social work. Alternatively, students may enter related employment.

DURATION

2 years

ENTRY REQUIREMENTS

Standard entry requirements, plus grade 4 in GCSE Science.

We also offer [Health and Social Care: Level 2](#), a one year course.

For full course details and how to apply, please visit www.henleycol.ac.uk

ICT AND COMPUTING: Level 3 Extended Diploma

WHAT WILL I STUDY?

This course is equivalent to three A Levels and offers an insight into the wide range of subject-related future opportunities available. During the first year, there is an introduction to the general principles of Computing and ICT. You will learn about how programs are designed and built and will investigate how computers are physically assembled. You will build your own websites and will be shown how data is stored in relational databases for use in software solutions. In the second year, you will add client and server-side scripts to your websites to build fully functional, fully interactive web-based solutions. Students will also explore how computer networks are put together and investigate how such networks are secured in the real world.

WHAT NEXT?

This course is excellent preparation for students who wish to progress to university to study Computer Science, Computer Forensics, Game Design, Multimedia or Information Technology. In addition, students are well placed for Apprenticeships in IT.

DURATION

2 years

ENTRY REQUIREMENTS

Standard entry requirements, preferred GCSE in computing or ICT.

For full course details and how to apply, please visit www.henleycol.ac.uk

CASE STUDY ICT



DAN RICHARDSON
TEACHER PROFILE

"I created KnowitallNinja for my students to help them revise and prepare for BTEC Level 2 and 3 Information Technology. The 'Cyber Security Unit' has been hugely popular as it's not only quite

niche and technical, there's also a massive demand in the growth of jobs. In fact, one of my students last year has started his cybersecurity apprenticeship. The growth of gamification in education is

exponential. Students can see the difference between the grade potential and have access to videos, quizzes, presentations, text content and an achievement leaderboard – all of which help to

encourage motivation and measure progress."
ICT teacher Dan, is an official writer for Pearson and created the website knowitallninja.com.

MUSIC PERFORMANCE AND PRODUCTION: Level 3 Extended Diploma

WHAT WILL I STUDY?

Equivalent to three A Levels, this course is a practical route into a career in music, providing opportunities to develop practical skills and theoretical knowledge. Projects and assignments are based on realistic workplace situations/activities and demands and include: principles of music performance and production, critical listening and music composition, music industry and professional practice, critical and contextual awareness for music performance and production, music performance in context, preparation for specialist study in music performance and production, collaborative music performance project, developing music performance and production skills and preparing for progression in music performance and production.

WHAT NEXT?

Students may progress on to university to study Music, or other related subjects. Others may go straight into the industry as performers, studio engineers, stage managers, composers or promoters.

DURATION

2 years

ENTRY REQUIREMENTS

Demonstrate instrumental playing or singing skills and musical knowledge sufficient to undertake a Level 3 music course. Plus standard entry requirements.

For full course details and how to apply, please visit www.henleycol.ac.uk

PERFORMING ARTS: Level 3 Extended Diploma

WHAT WILL I STUDY?

This vocational course, equivalent to three A Levels, is designed for students who are serious about pursuing a career in the performing arts. It combines the three core disciplines of acting, dance and singing. Students underpin their practical work with rigorous academic study and the course provides many opportunities to perform work to the public. The department regularly organises theatre visits and students have toured work in the UK and abroad. Workshops are often organised with professional performers, directors and production staff. The College is a LAMDA approved examination centre and offers students the opportunity to study for LAMDA examinations if they wish alongside their course.

WHAT NEXT?

Many students progress into higher education, at institutions such as RADA, Bristol Old Vic, Central School of Speech and Drama, Rose Bruford, Mountview Academy and a range of universities. Alternatively, students may consider direct entry into employment.

DURATION

2 years

ENTRY REQUIREMENTS

Standard entry requirements. GCSE 4 in English Literature. GCSE Dance and/or Drama desirable. Alternatively, BTEC Level 2 Distinction. Applicants are required to attend an audition and interview.

For full course details and how to apply, please visit www.henleycol.ac.uk

CASE STUDY PERFORMING ARTS



**ÓSCAR HOGG
GOMEZ**
STUDENT PROFILE

Studied

Performing Arts: Level 3 Extended Diploma

Why did you chose the course?

I joined The Henley College because I wanted to be a screen actor and the performing arts

course seemed to lend itself perfectly to this industry.

I was surrounded by so many talented people on my course and this inspired me to pursue music as my passion for this subject grew greatly.

I've made some good

friends that I'm currently collaborating with on an album which will be released on late September and we're going to university together. I want to focus on becoming a talented musician, wherever my music takes me.

Next steps

Óscar now attends the Academy of Contemporary Music.

Oscar came to The Henley College from Burnham Park Academy.

PUBLIC SERVICES: Level 3 Extended Diploma

WHAT WILL I STUDY?

Equivalent to three A Levels, this course is excellent preparation for students wishing to pursue a career in the public sector. It will provide you with a wide range of transferable skills and enhance your communication and leadership abilities. There is a range of core and optional units which include human behaviour, citizenship and contemporary issues, teamwork and leadership. You will also examine major incidents, how they are dealt with and what causes disasters. In year two, areas of study include criminology, law and the legal system, international perspectives and the democratic process. You will also have the opportunity to carry out your own research on the local area and to address issues such as equal opportunities and cultural awareness.

WHAT NEXT?

This course is an accepted qualification for entry into university to study subjects including police studies, law, sociology, criminology and psychology. Alternatively, students may consider direct entry into employment.

DURATION

2 years

ENTRY REQUIREMENTS

Standard entry requirements.

For full course details and how to apply, please visit www.henleycol.ac.uk

SPORT AND EXERCISE SCIENCES: Level 3 Extended Diploma

WHAT WILL I STUDY?

This two year course, equivalent to three A Levels, will prepare students for higher education, or for employment in the sports industry. You will develop extended writing skills, the ability to meet deadlines and learn how to complete effective research. You will also develop transferable and work-ready skills and an understanding of industry requirements.

Students are taught the fundamentals and specialist aspects of sport and exercise within a unit based structure. You are encouraged to combine your studies with one of the College's sport programmes. Students will benefit from impressive facilities, including a modern multipurpose sports hall and fitness, strength and conditioning suite.

WHAT NEXT?

This course is widely recognised by industry and for entry to higher education. Careers might include PE teaching, sports management, physiotherapy, sports nutrition and sports journalism. It is also excellent preparation for those progressing to take industry-recognised qualifications.

DURATION

2 years

ENTRY REQUIREMENTS

Standard entry requirements, plus grade 4 in GCSE Science.

For full course details and how to apply, please visit www.henleycol.ac.uk

CASE STUDY PUBLIC SERVICES



DAMON MCGOURTY
STUDENT PROFILE

Studied

BTEC Level 3 Extended Diploma Public Services

Why did you choose the course?

"I have a keen interest in law and the work of services in their responses to incidents,

such as the police and their work in handling major crimes, their investigative techniques and how they work with others. The structure of the Public Services course is clear and easy to understand, enabling me to manage

my work load. The college environment has increased my independence and boosted my self-motivated attitude. Time outside of classes also allows me and other students to take advantage of the

surrounding area of Henley town."

Next steps

A career in the police.

Damon came to The Henley College from Langtree School.

TRAVEL & TOURISM:

Level 3 Extended Diploma

WHAT WILL I STUDY?

This course, equivalent to three A Levels, is aimed at students looking to work in the travel and tourism industry, or related areas in the future. You will take an in-depth look at the sector and examine subjects including the business of travel and tourism, the UK as a destination, customer service in travel and tourism and the importance of marketing. You will look at long-haul travel, European destinations, entertainment for holidaymakers and working as a holiday rep. Work experience also forms an important part of the course. Previous optional residential trips have included New York, Iceland, Disneyland Paris and San Francisco.

WHAT NEXT?

This course is an accepted qualification for entry into university, with students going on to study subjects including travel and tourism, event management, international marketing, international business and public relations.

DURATION

2 years

ENTRY REQUIREMENTS

Standard entry requirements.

For full course details and how to apply, please visit www.henleycol.ac.uk

TRAVEL & TOURISM:

(Introduction to Cabin Crew): Level 2 Certificate

WHAT WILL I STUDY?

This qualification gives learners the opportunity to develop an understanding of the principles of the travel and tourism industry and allow them to explore the various avenues of work within this industry. The Air Cabin Crew course entails mandatory units looking at: working as cabin crew, airline health, safety and security, aircraft emergency situations, cabin service-selling techniques and making passenger announcements.

WHAT NEXT?

This qualification allows students to develop an understanding of the principles of the travel and tourism industry. It is also designed to provide students with an introduction to the knowledge needed to work as cabin crew.

DURATION

1 year

ENTRY REQUIREMENTS

GCSE English & Maths grade 3 plus 3 other subjects at grade 3.

NEXT STEPS

Progression to Level 3.

For full course details and how to apply, please visit www.henleycol.ac.uk

CASE STUDY SPORTS



ETHAN ROGERS
STUDENT PROFILE

Studied

BTEC Level 3 Sports & Exercise Science & French A Level

Why did you choose the course?

I chose this course because it was an accredited Sports Science BTEC, allowing

me to pursue my interest in the subject and to obtain further knowledge of different career paths in the sporting industry. It also gave me the opportunity to combine my education with participation in the

Henley AASE Rugby Programme. The course is really diverse and covers 18 different sport-related units, with a mixture of group work and independent study, and has helped develop my research and report writing abilities.

Next steps

A degree in Sports & Exercise Science.

Ethan came to The Henley College from International School of Luxembourg

VOCATIONAL QUALIFICATIONS ALONGSIDE A LEVELS: Certificates and Diplomas

Some vocational qualifications can be studied alongside A Levels. At The Henley College, we offer a range of subjects in extended certificates and a subsidiary diploma, both at Level 3 and studied over a 2 year period.

LEVEL 3 EXTENDED CERTIFICATES

- Applied Human Biology
- Applied Criminology
- Applied Law
- Applied Psychology
- Information Technology

LEVEL 3 SUBSIDIARY DIPLOMA

- Production Arts

These qualifications are an ideal way to build UCAS points and subject knowledge to complement an A Level programme, but may suit students who prefer being assessed by a combination of coursework and exams.

To find out more information please visit the courses section of our website:
www.henleycol.ac.uk

THE A LEVEL EQUIVALENCE IS:

Certificate	= 1 AS Level
Extended Certificate	= 1 A Level
Foundation Diploma	= 1.5 A Levels
Diploma	= 2 A Levels
Extended Diploma	= 3 A Levels



HOW TO APPLY

Please visit our website to apply online via: www.henleycol.ac.uk/apply

Or contact our admissions team via admissions@henleycol.ac.uk or **01491 579988**

The Henley College





Deanfield Avenue
Henley-on-Thames
Oxfordshire RG9 1UH
info@henleycol.ac.uk
henleycol.ac.uk



Why not sign up to one of our events?

Visit www.henleycol.ac.uk/events to explore available dates and to register

Keep up-to-date with College news by visiting our social media channels:

-  [thehenleycollege](https://www.facebook.com/thehenleycollege)
-  [@henleycol](https://twitter.com/henleycol)
-  [thehenleycollege](https://www.instagram.com/thehenleycollege)
-  [The Henley College Official](https://www.youtube.com/TheHenleyCollegeOfficial)

COME
QUESTIONING,
GO SEEKING,
GROW



YOUR FEEDBACK



We are always seeking to give our students and their parents an excellent experience at The Henley College. We welcome your comments and ideas to help us adapt and improve what we do now and in the future.



The Henley College

Deanfield Avenue
Henley-on-Thames
Oxfordshire RG9 1UH

01491 579988

info@henleycol.ac.uk

henleycol.ac.uk

-  [thehenleycollege](https://www.facebook.com/thehenleycollege)
-  [@henleycol](https://twitter.com/henleycol)
-  [thehenleycollege](https://www.instagram.com/thehenleycollege)
-  [The Henley College Official](https://www.youtube.com/TheHenleyCollegeOfficial)

Apply now via: henleycol.ac.uk/apply